



University of North Texas
Founding Director, Institute of Autism Research Excellence
Position Profile

The University of North Texas (UNT) invites expressions of interest, nominations and applications for the Founding Director of the Institute of Autism Research Excellence. As the Founding Director UNT's newest Institutes of Research Excellence, the successful candidate will lead the Institute of Autism Research Excellence in its vision to make significant contributions in innovative basic and applied research on Autism Spectrum Disorder (ASD) and attain international reputation in the field.

UNT Institutes of Research Excellence

UNT originally launched four Institutes of Research Excellence, seeding their initial operation through intramural and philanthropic support to create synergies and connect researchers to enable significantly larger, more visible and impactful sponsored projects. These Institutes reflect existing and targeted institutional strengths in plant biology-based products, advanced materials and manufacturing, environmental research, and logistics research.

The Institutes will be focal points, building on intrinsic strengths, around which to create a "critical mass" of active researchers necessary to solidify UNT's Carnegie Institution designation as Tier One Research University. The faculty members who form the basis of the Institutes have considerable external visibility, excellent track records in attracting external funding, wide and deep industry contacts, and significant potential for interdisciplinary research. The Institutes go beyond traditional departmental boundaries to encourage a culture that promotes innovation and interdisciplinary activities that promote external funding. For more information regarding UNT's Institutes of Research Excellence, please visit <https://research.unt.edu/institutes>.

The Institute of Autism Research Excellence

The primary goal of the Institute of Autism Research Excellence is to strengthen the Tier One Research University designation by increasing funded research activities at UNT. The Institute will provide organizational structure to existing and new research initiatives in ASD as well as support, retain, and attract world-class researchers. Research in ASD is a highly-fundable area given that it presents large educational, medical, social, and economic impact across the lifespan. According to data from the Centers for Disease Control (2016), approximately 1 in 68 children are diagnosed with ASD, and ASD is reported to occur in all racial, ethnic, and socioeconomic groups.

Consisting of multidisciplinary scientists and practitioners across 10 academic departments and six colleges as well as the Kristin Farmer Autism Center and Student Services, the Institute will develop and advance diagnosis and therapeutic outcomes to improve the quality of life for individuals with ASD across the lifespan. Institute members encompass expertise in a wide-range of basic and applied research areas including behavior, biology, communication, education, health, and technology. The Institute will play a key role in the development of specialized training programs that will create superior undergraduate and graduate educational experiences, with a particular focus on doctoral-level training, in multidisciplinary research on ASD. The multi-dimensional structure of the institute will

facilitate sustainable collaboration with families, schools, and community partners.

The Institute will also foster community engagement and outreach in addition to specialized training and evidence-based clinical and educational programs for individuals with ASD across the lifespan. At UNT, these services will be provided at centers, clinics, and laboratories, such as the Kristin Farmer Autism Center, the Speech and Hearing Center, UNT Wellness and Employment Learning Lab (UNT WELL), Technology and Applied Research in Autism Laboratory, and within several departments. Services will also be provided outside of UNT in cooperation with community partners including Denton State Supported Living Center, Texas Health and Human Services Commission (HHSC), Department of Aging and Disability Services (DADS), Early Childhood Intervention Services, Texas Education Agency (TEA), Texas Workforce Commission's Vocational Rehabilitation Services, UNT Health Science Center, Easter Seals, Child Study Center, and public schools across the DFW metroplex. Types of services will include applied behavior analysis, auditory training, speech-language therapy, technology utilization, employment assistance, social and communication strategies, tutoring, counseling for individuals with ASD and their caregivers, and learning strategies. These community partnerships will provide individuals with ASD with the multidisciplinary education and support necessary to create and sustain a quality of life filled with purpose.

Position Summary

The Institute for Autism Excellence's Founding Director will be a dynamic leader, motivator, and excellent communicator who has current and sustained Federal research funding in ASD. The Director will have substantial experience in leadership roles, administration, and mentorship. This individual will establish and elevate the Institute by facilitating multi-disciplinary collaboration, communication, and funded research addressing fundamental questions in ASD.

The Director should be a visionary researcher who is interested in exploring and developing innovative and creative programs, services, and products that are evidence-based and provide culturally responsive care across the lifespan. The Director must be able to build relationships, manage teams effectively, facilitate research, coordinate community outreach, budget resources and human capital, and build synergy for cohesive and comprehensive autism support at UNT, throughout the Dallas/Fort Worth metropolitan area, and beyond.

The Director will have a demonstrated record of fostering innovation and out-of-the-box thinking through interdisciplinary collaborations internally and externally. This individual will be tenured in a department within his/her discipline and will be evaluated annual by the UNT Office of the Vice President for Research and Innovation.

The University of North Texas

Since 1890, the University of North Texas (UNT) has been dedicated to providing excellent educational experiences to its students, while fueling the intellectual, economic and cultural progress of the Dallas-Fort Worth Metroplex, one of the largest, most dynamic regions in the United States. A student-focused public research university, UNT confers more than 9,000 degrees each year from its 13 colleges and schools and offers 103 bachelor's, 88 master's and 39 doctoral/professional degree programs, many nationally and internationally recognized. By providing access to quality educational experiences, welcoming diversity and strengthening collaborations with many educational, business and community partners, as well as building new partnerships across the globe, UNT's faculty and staff work each day to prepare its over 38,000 students for the challenges they will meet in our changing world. In addition, UNT has developed Discovery Park, a research park with technology incubator facilities on a 300-acre property near the main campus. UNT is located in Denton, which has ranked in the top 25 of the

fastest growing cities of populations of 100,000 or more, since 2006. The University of North Texas is classified by the Carnegie Foundation as a Tier One University, one of 115 Universities across the country with the “Highest Research Activity”. For more information about UNT, please visit <https://www.unt.edu/>.

Qualifications

- Ph.D. in relevant discipline
- Ability to be tenured as a full professor at UNT
- Successful track record of significant external funding in an area related to autism research
- History of successful collaboration among cross disciplinary research
- Proven experience in academic leadership
- Experience of leading and successfully initiating and implementing change

Application Process

The Search Committee will begin reviewing applications immediately and will continue to accept applications and nominations until the position is filled. Applicants must submit a current resume and/or curriculum vitae, along with a letter of interest describing relevant experience and interest in the position. Submission of materials via e-mail is strongly encouraged. Nomination letters should include the name, position, address and telephone number of the nominee. All nominations and applications will be handled in confidence.

Applications and letters of nomination should be submitted to:



Alberto Pimentel, Managing Partner
Robin Reyes, Associate
Storbeck/Pimentel & Associates
6512 Painter Avenue
Whittier, CA 90601

Email: apsearch@storbeckpimentel.com
Refer to code “**UNT-IARE**” in subject line

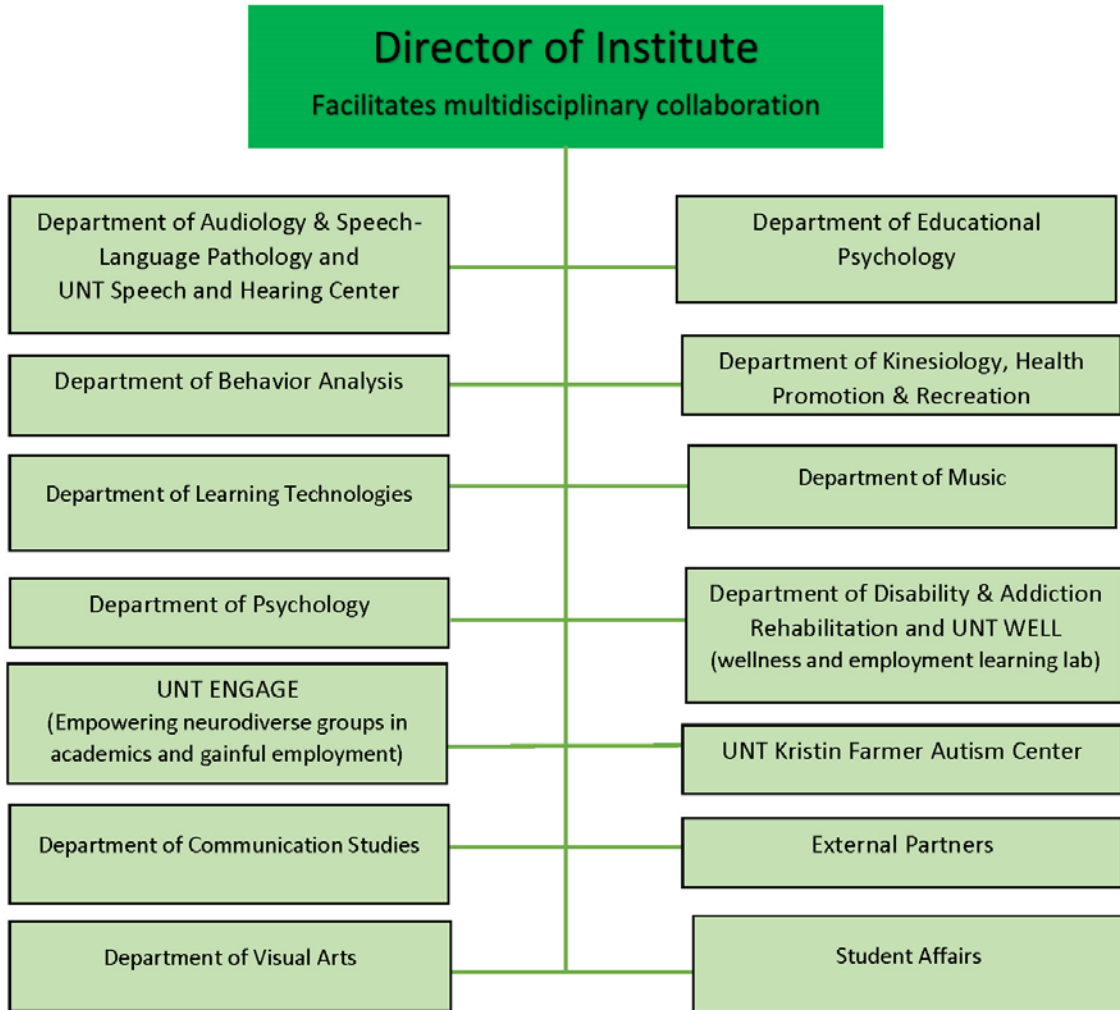
The University of North Texas System is firmly committed to equal opportunity and does not permit - and takes actions to prevent - discrimination, harassment (including sexual violence), and retaliation on the basis of race, color, religion, national origin, sex, sexual orientation, gender identity or expression, age, disability, family status, genetic information, citizenship or veteran status in its application and admission processes, educational programs and activities, facilities, and employment practices. The University of North Texas System immediately investigates and takes remedial action when appropriate.

The University of North Texas System also takes actions to prevent retaliation against individuals who oppose a discriminatory practice, file a charge, or testify, assist or participate in an investigative proceeding or hearing.



University of North Texas
Founding Director, Institute of Autism Research Excellence
Supplemental Information

Organizational Structure of Institute





University of North Texas
Founding Director, Institute of Autism Research Excellence
Supplemental Information (continued)

The diverse membership of the Institute includes the following faculty and staff within the following departments:

Audiology & Speech-Language Pathology and UNT Speech and Hearing Center

- Kamakshi Gopal – Auditory biomarkers; auditory processing
- Lauren Mathews – Clinical speech-language pathology-nonverbal communication; auditory processing; Theory of Mind
- Erin C. Schafer – Auditory processing, auditory training, and hearing technology

Behavior Analysis

- Shahla Ala'i-Rosales – Training professionals; cultural responsiveness; parental relationships
- Karen Toussaint – Early intervention; assessment and treatment of problem behavior
- Einar Ingvarsson – Intervention to promote language and communication; treatment of problem behavior
- Jesus Rosales-Ruiz – Emotions and corrections during teaching; teaching parents strategies for happiness
- Richard Smith – Severe/profound disabilities in adults; behavior management training

Communications Studies

- Brian Richardson

Disability & Addiction Rehabilitation

- Chandra Carey – multicultural issues, family issues, supported employment
- Linda Holloway – Transition, supported employment, social support in college
- Rachita Sharma – Vocational Assessment, Counseling, Personal & Social Adjustment
- Wei-Mo Tu – Transition, vocational rehabilitation, psychosocial adjustment

Educational Psychology

- Miriam Boesch – Augmentative alternative communication; challenging behavior; teacher training
- Bertina Combes – Highly qualified teacher training
- Smita Mehta – Function-based interventions; social communication training
- Amarie Carnett – Interventions to teach communication skills and functional and adaptive skills

Kinesiology, Health Promotion & Recreation

- Tao Zhang – Movement and physical activity intervention, active video gaming



University of North Texas
Founding Director, Institute of Autism Research Excellence
Supplemental Information (continued)

Learning Technologies

- Demetria Ennis-Cole – Technology for special populations; applied research

Music

- John Murphy – Accommodating students in music programs

Psychology

- Thomas Parsons – Virtual training; neuropsychology

Student Affairs

- Tamara Knapp-Grosz – Counseling and Testing
- Katy Washington – Disability Accommodation Office

UNT Kristin Farmer Autism Center

- Kevin Callahan – Social validity; evidence-based practices; Identification of biomarkers
- Susan Nichols – Social communication; social validity

Visual Arts

- Elaine Pawlowicz